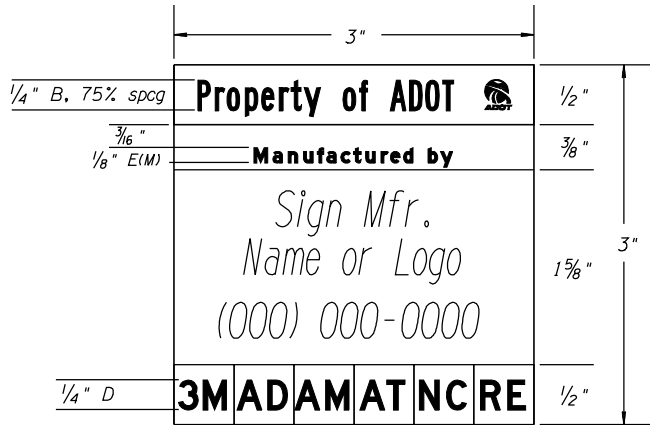
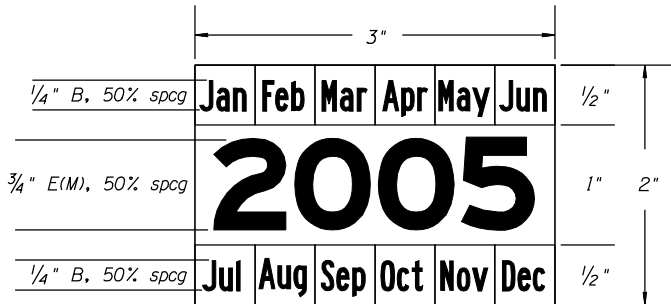


NO	DESCRIPTION OF REVISIONS	MADE BY	DATE
1	NEW ISSUE	R.M. / L.L.	2/05
2	SPELLING CORRECTION	L. LOPEZ	2/08
3			
4			



MANUFACTURER IDENTIFICATION DECAL

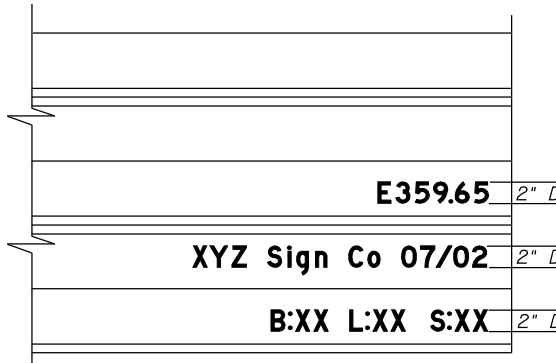


INSTALLATION DATE DECAL

DECALS FOR REGULATORY, WARNING, AND MARKER SIGN PANELS (BLACK ON WHITE)

MANUFACTURER CODES:

- 3M: 3M (MINNESOTA MINING AND MANUFACTURING)
- AD: AVERY DENNISON (STIMSONITE)
- AM: AMERICAN DECAL
- AT: AMERICAN TRAFFIC SAFETY MATERIALS
- NC: NIPPON CARBIDE
- RE: REFLEXITE



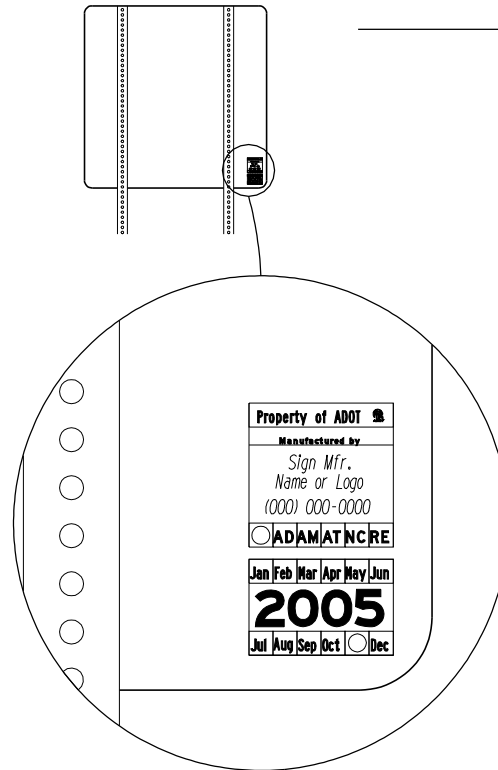
LETTERING FOR BACK OF EXTRUDED AND FLAT SHEET GUIDE SIGN PANELS (BLACK)

FIRST LINE: SIGN ID CODE AS NOTED IN PROJECT PLANS
 SECOND LINE: SIGN MANUFACTURER (SEE NOTES) AND DATE OF INSTALLATION (MO/YR)
 THIRD LINE: CODE BLOCKS DENOTING SHEETING/INK/FILM MANUFACTURER FOR SIGN COMPONENT

SIGN COMPONENT CODES:
 B: SIGN BACKGROUND
 L: SIGN LEGEND AND BORDER
 S: SHIELDS OR ROUTE MARKERS
 REPLACE "XX" WITH THE MANUFACTURER CODE FOR THAT COMPONENT (SEE LIST)

NOTES:

1. DECALS AND LETTERING SHALL BE MADE OF A OPAQUE FILM AND INK SYSTEM WHICH HAS AT LEAST A RATED VERTICAL OUTDOOR EXPOSURE LIFE OF 10 YEARS OR GREATER.
2. THE DECALS AND LETTERING SHALL BE PLACED ON THE BACK SIDE OF SIGNS NEAR THE BOTTOM RIGHT CORNER OF THE SIGN PANEL AS IS PRACTICABLE SO AS TO BE CLEARLY VISIBLE. DECALS SHALL NOT BE OBSTRUCTED BY ANY SIGN MOUNTING POST OR HARDWARE.
3. THE MANUFACTURER IDENTIFICATION DECAL MAY BE APPLIED PRIOR TO SIGN INSTALLATION. THE INSTALLATION DATE DECAL SHALL BE APPLIED AFTER THE SIGN IS INSTALLED IN ITS FINAL LOCATION. THE TYPE OF SHEETING AND THE MONTH OF INSTALLATION SHALL BE INDICATED BY PUNCHING OUT THE SPACE PROVIDED ON THE DECAL WITH A STANDARD HOLE PUNCH.
4. THE YEAR PRINTED AT THE BOTTOM OF THE DECAL SHALL MATCH THE YEAR OF INSTALLATION OF THE SIGN PANEL.
5. A PREPRINTED DECAL (4" MAX. HEIGHT) WITH THE SIGN MANUFACTURER'S NAME AND/OR OTHER CONTACT INFORMATION MAY BE SUBSTITUTED FOR THE MANUFACTURER NAME ON EXTRUDED AND FLAT SHEET GUIDE SIGN PANELS.



INSTALLATION EXAMPLE

NOT TO SCALE

DESIGN APPROVED	ARIZONA DEPARTMENT OF TRANSPORTATION INTERMODAL TRANSPORTATION DIVISION STANDARD DRAWINGS	REV. 2/08
APPROVED FOR POSTING	SIGN IDENTIFICATION DETAILS	DRAWING NO. S-13

SIGNATURE ON FILE