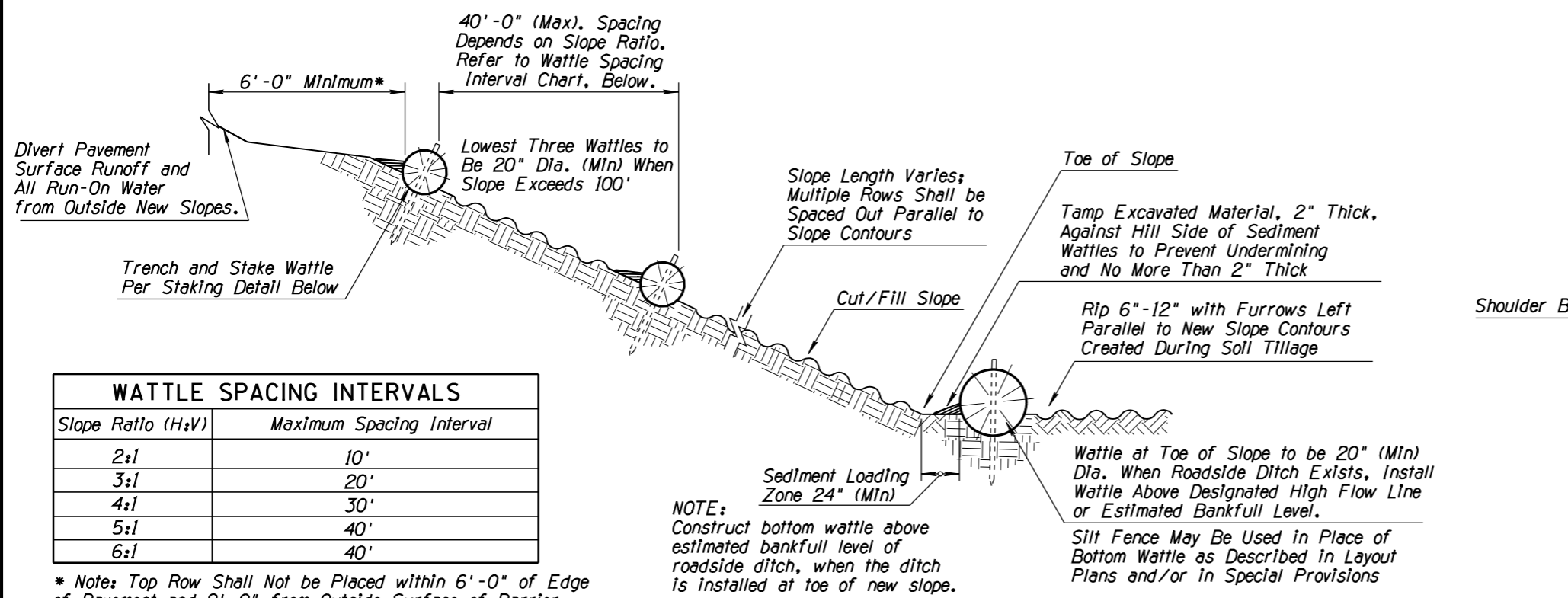
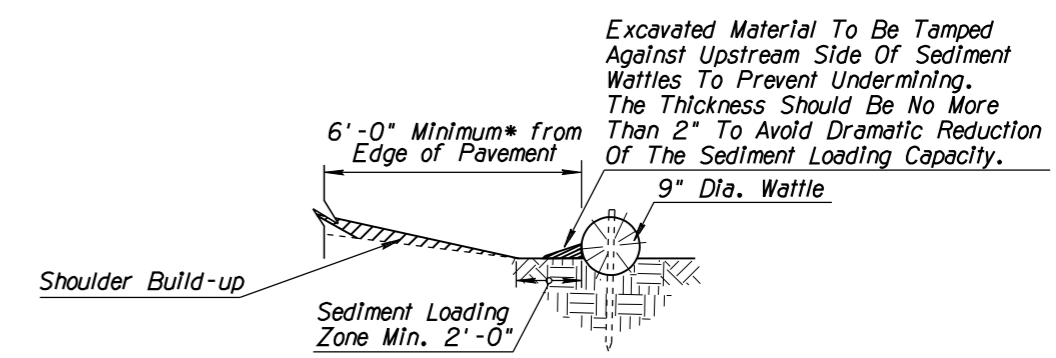


F.H.W.A. REGION	STATE	PROJECT NO.	SHEET NO.	TOTAL SHEETS	AS BUILT
9	ARIZ.				



WATTLE SPACING INTERVALS	
Slope Ratio (H:V)	Maximum Spacing Interval
2:1	10'
3:1	20'
4:1	30'
5:1	40'
6:1	40'

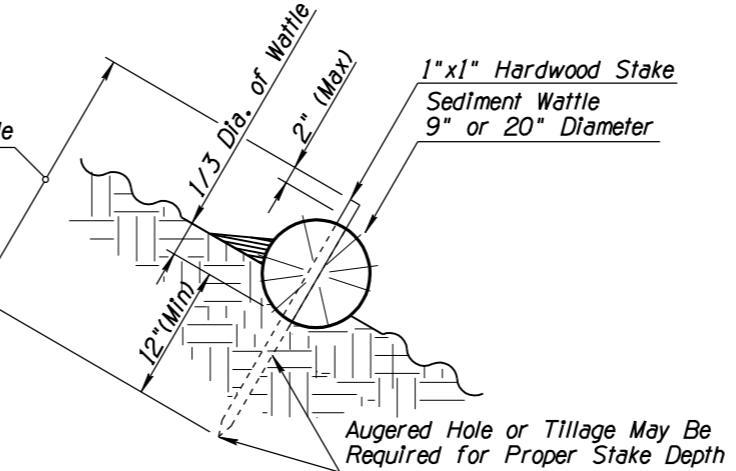
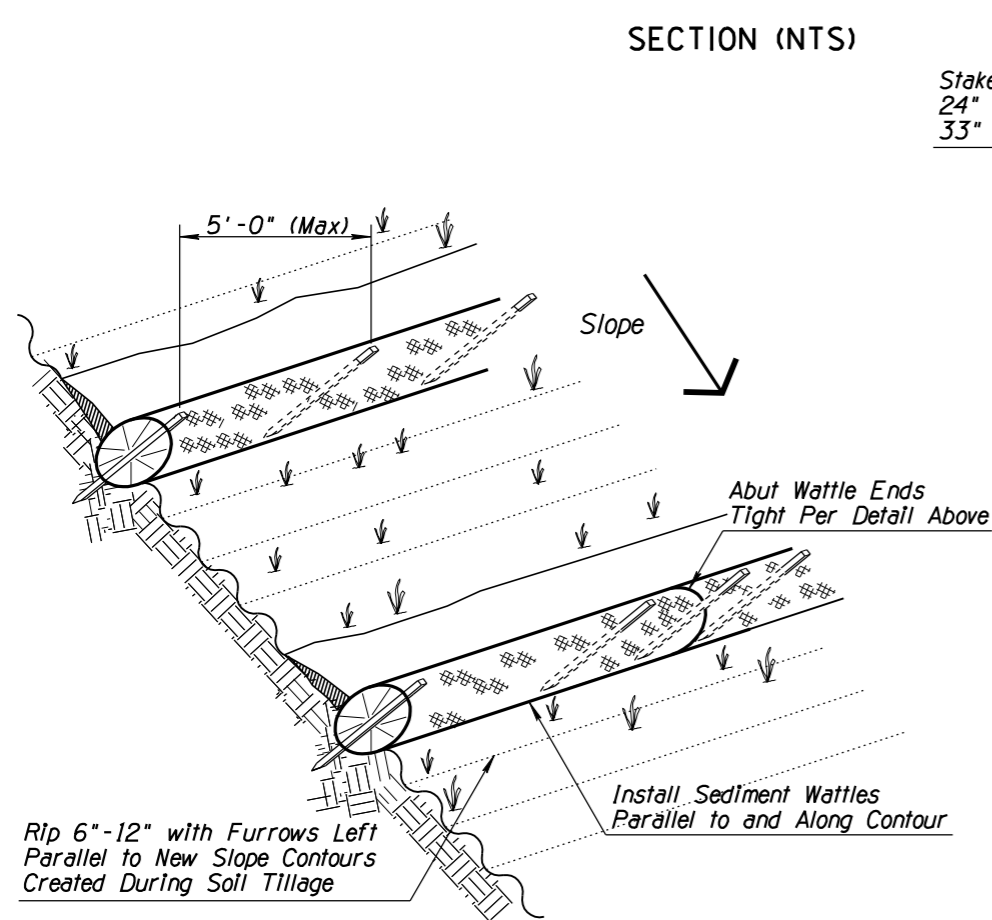
\* Note: Top Row Shall Not be Placed within 6'-0" of Edge of Pavement and 9'-0" from Outside Surface of Barrier



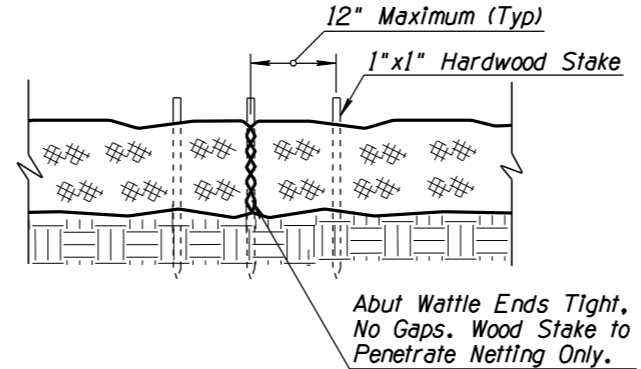
### NEW SHOULDER BUILDUP PROTECTION SECTION (NTS)

- NOTES:
1. Install Sediment Wattles as slopes are constructed to grade or as directed by the Engineer. Select, install and maintain in conformance with manufacturers' specifications to meet site conditions for slope protection and in accordance with good engineering practices. No Sediment Wattles shall be installed in urban freeway medians, nor where cable barrier systems are employed.
  2. Sediment Wattles shall be in continuous contact with trench bottom and sides. Do not overlap wattle ends on top of each other. A 20" Dia. wattle may be made from 2-3 rolled excelsior or straw blankets.
  3. Butt adjoining wattles tightly against each other. Drive the first end stake of the second wattle at an angle toward the first wattle to help abut them tightly.
  4. Repair any rills or gullies promptly. Field adjust and correct Wattle BMP immediately if it is causing flooding, erosion, and/or affecting roadway safety.
  5. Construction of cut slopes 2:1 and steeper in soil and rock materials that can be ripped shall be constructed, whenever possible, by Minibenching. Refer to Slope Minibenching Detail.
  6. Loosening surface soil is not required where Minibenches are used. For seeded areas, tillage shall be performed to form minor ridges and furrows parallel to new slope contours and as specified in Section 805 of the Standard Specifications.
  7. Divert and direct run-on water from outside of the slopes to the spillways and/or rock riprap/rock mulch. Diversion dikes and/or ditches are necessary on natural undisturbed slopes beyond the top limits of new slopes to divert run-on water.
  8. Installation and maintenance of Sediment Wattle BMPs shall not negatively impact traffic safety, nor the designed function of roadway or bridge drainage facilities.
  9. Install and maintain Sediment Wattle BMPs to carry the stormwater of at least 2-year, 24-hour events.
  10. The Sediment Wattle BMP's pay/bid item shall include all materials used for this BMP: all ground preparation, furnishing, installing, maintenance, final removal, and disposal of this temporary BMP, as well as returning the area to an acceptable condition as approved by the Engineer.
  11. Refer to Standard Specification Section 810-2.06(C) for Sediment Wattle material specifications.

### SECTION (NTS)



### SEDIMENT WATTLE STAKING DETAIL (NTS)



### SEDIMENT WATTLE OVERLAP (NTS)

### SEDIMENT WATTLE LAYOUT (NTS)

# DETAIL ES3

## SEDIMENT WATTLE

DESIGN	NAME	DATE	ARIZONA DEPARTMENT OF TRANSPORTATION INTERMODAL TRANSPORTATION DIVISION ROADSIDE DEVELOPMENT SECTION
DESIGN	TAO ZI FONG	5-2011	STORMWATER QUALITY PROTECTION & EROSION/SEDIMENT CONTROL DETAILS
DESIGN	HAN MENG	5-2011	
DRAWN	TAO ZI FONG	5-2011	STORMWATER QUALITY PROTECTION & EROSION/SEDIMENT CONTROL DETAILS
DRAWN	HAN MENG	5-2011	
CHECKED	E LEROY BRADY	5-2011	STORMWATER QUALITY PROTECTION & EROSION/SEDIMENT CONTROL DETAILS
TEAM LEADER	E LEROY BRADY	5-2011	
ROUTE	MP	LOCATION	
TRACS NO.			SHEET OF
			OF

DATE  
MADE BY  
NO. 1 DESCRIPTION OF REVISION  
DATE  
MADE BY  
NO. 2 DESCRIPTION OF REVISION  
DATE  
MADE BY