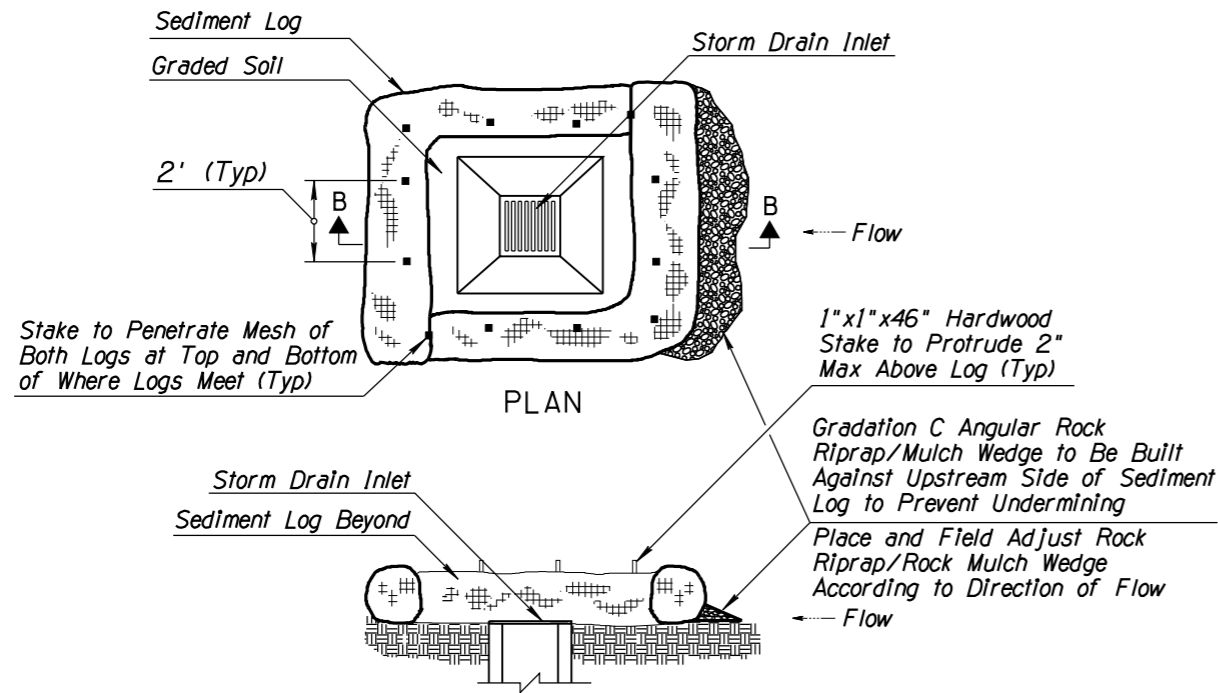
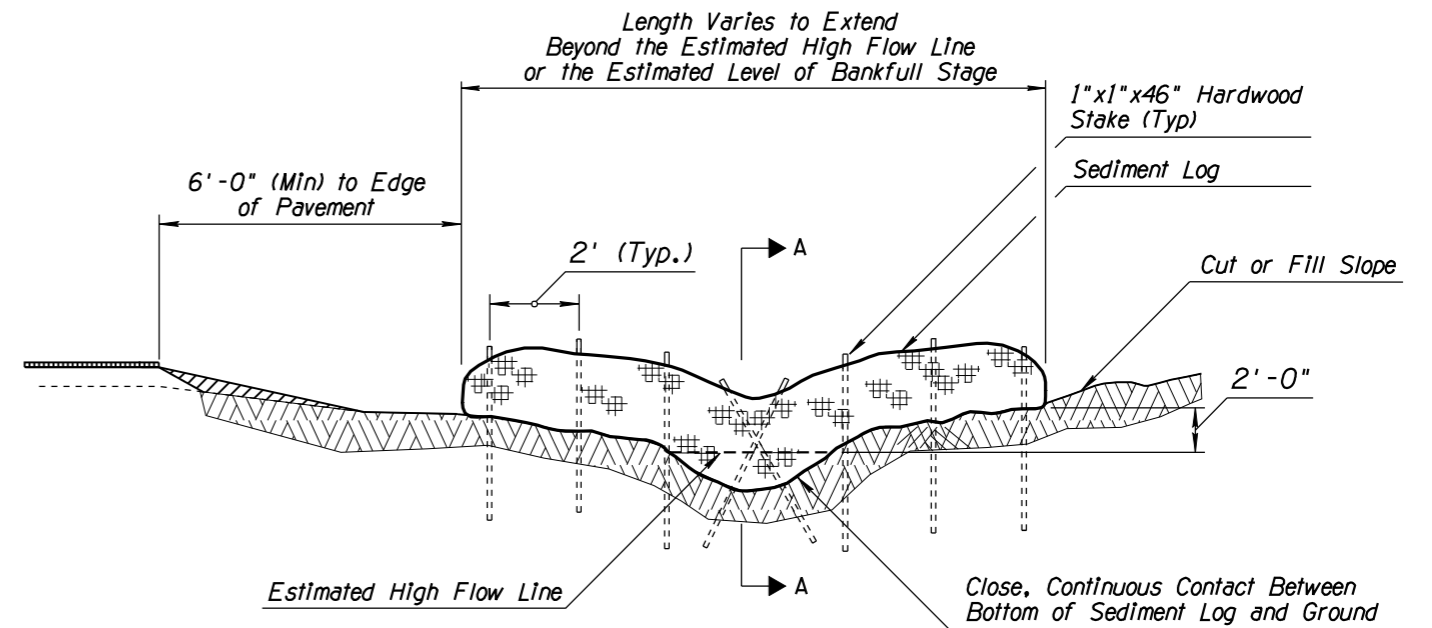


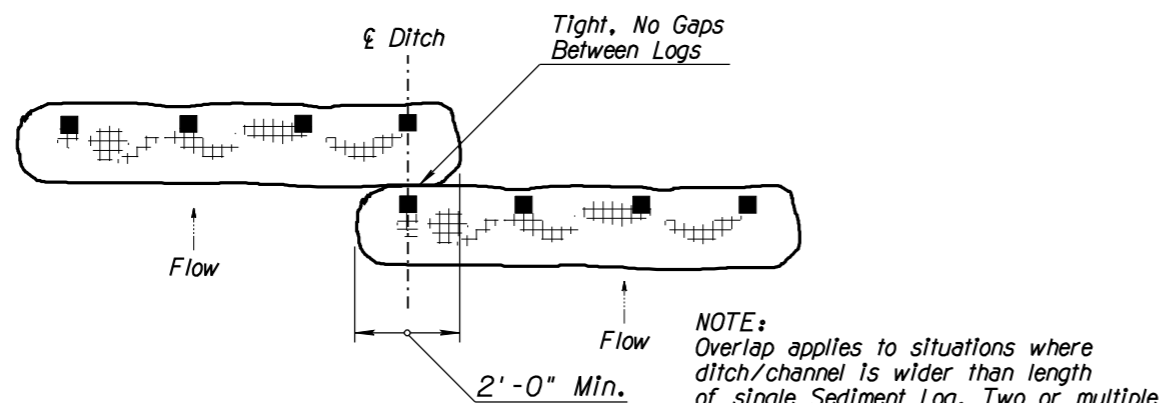
F.H.W.A. REGION	STATE	PROJECT NO.	SHEET NO.	TOTAL SHEETS	AS BUILT
9	ARIZ.				



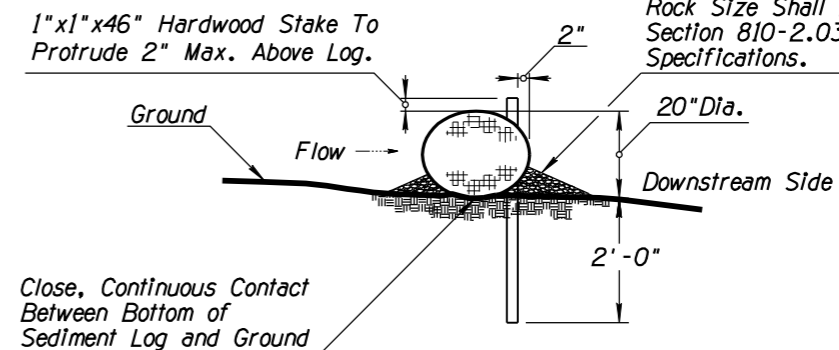
SEDIMENT LOG AT STORM DRAIN SECTION B-B (NTS)



SEDIMENT LOG IN DITCH/CHANNEL SECTIONAL ELEVATION (NTS)



TYPICAL OVERLAP PLAN (NTS)



SECTION A-A (NTS)

Rock Riprap/Mulch Wedge (approx. 12" wide x 5" high) to be Tamped Against Both Upstream and Downstream Sides of Sediment Log to Prevent Undermining. Rock Size Shall Be Gradation C as Per Section 810-2.03 of the Standard Specifications.

NOTES:

- Sediment Logs shall not be installed in the urban freeway medians, nor where cable barrier systems are employed.
- Locate Sediment Logs as indicated in plans, SWPPP or as directed by the Engineer.
- Select, install and maintain Logs per manufacturers' specifications and good engineering practices.
- Lay sediment log across prepared ditch or channel. Trenching or burial of Sediment Logs is not required. The close, continuous contact between the bottom of the Log and the ground is mandatory. The Logs shall be installed in the ditch, swale or channel bottom perpendicular to the flow of water as shown on detail this sheet.
- Stake Log as shown. Stakes shall be placed through downstream side only as shown.
- DO NOT drive stakes through center of the log. Stakes must be driven into the ground as shown.
- Ensure that no gaps exist between soil and bottom of Sediment Log. Repair any rills or undercuts promptly.
- Placement of Sediment Logs shall be evaluated by the Engineer in rocky soil conditions.
- Remove Sediment Log BMPs within the ditches/channels and around the storm drain inlets as per the Direction of the Engineer or as soon as practicable upon stabilization of the construction disturbed area.
- Dispose of Sediment Logs and trapped sediment material and fill trench created by Sediment Log.
- The installation and maintenance of Sediment Log BMPs shall not negatively impact traffic safety, nor the designed function of roadway or bridge drainage facilities. Sediment Logs shall be installed and maintained to carry the stormwater of at least 2-year, 24-hour events.
- Field adjust and correct Sediment Log BMP immediately if it is causing flooding, erosion, and/or affecting roadway safety.
- Install rock mulch/riprap for channel/ditch lining or rock check dams for longitudinal ditch slopes that exceed 5% and/or for soil conditions not suitable for log installation.
- The Sediment Log BMP's pay/bid item shall include all materials used for this BMP: all ground preparation, furnishing, installing, maintenance, final removal, and disposal, as well as returning the area to an acceptable condition as approved by the Engineer.
- Refer to Standard Specification Section 810-2.06(B) for Sediment Log material specifications.

DETAIL ES1
SEDIMENT LOG

DESIGN	NAME	DATE	ARIZONA DEPARTMENT OF TRANSPORTATION INTERMODAL TRANSPORTATION DIVISION ROADSIDE DEVELOPMENT SECTION STORMWATER QUALITY PROTECTION & EROSION/SEDIMENT CONTROL DETAILS
DESIGN	TAO ZI FONG	5-2011	
DRAWN	HAN MENG	5-2011	
DRAWN	TAO ZI FONG	5-2011	
DRAWN	HAN MENG	5-2011	
CHECKED	E LEROY BRADY	5-2011	
TEAM LEADER	E LEROY BRADY	5-2011	
ROUTE	MP	LOCATION	
TRACS NO.			SHEET OF
			___ OF ___