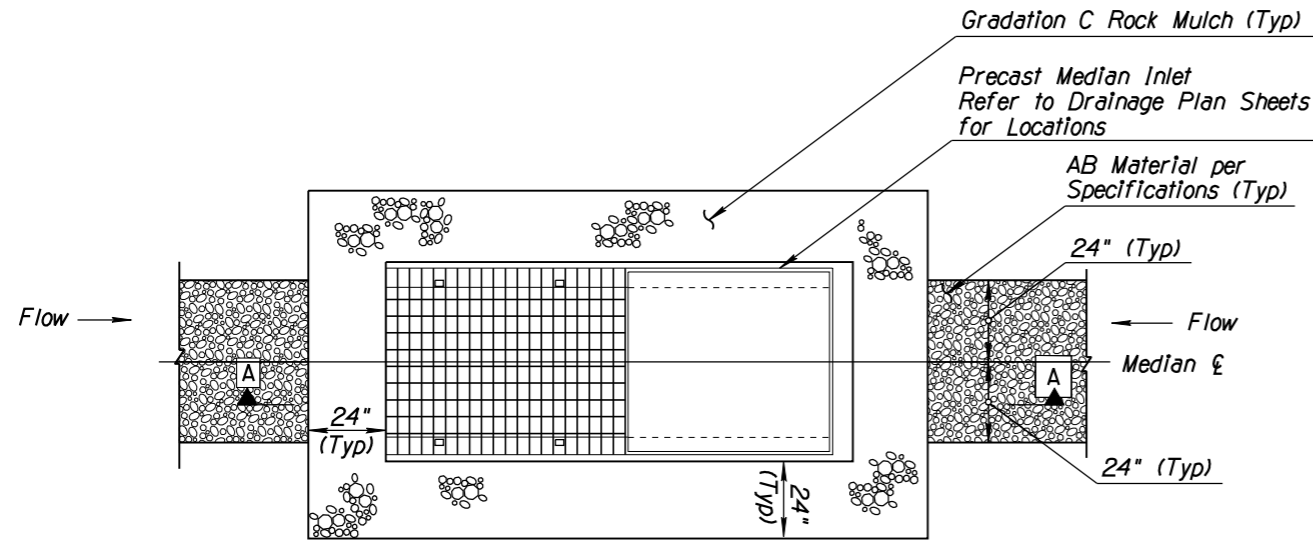
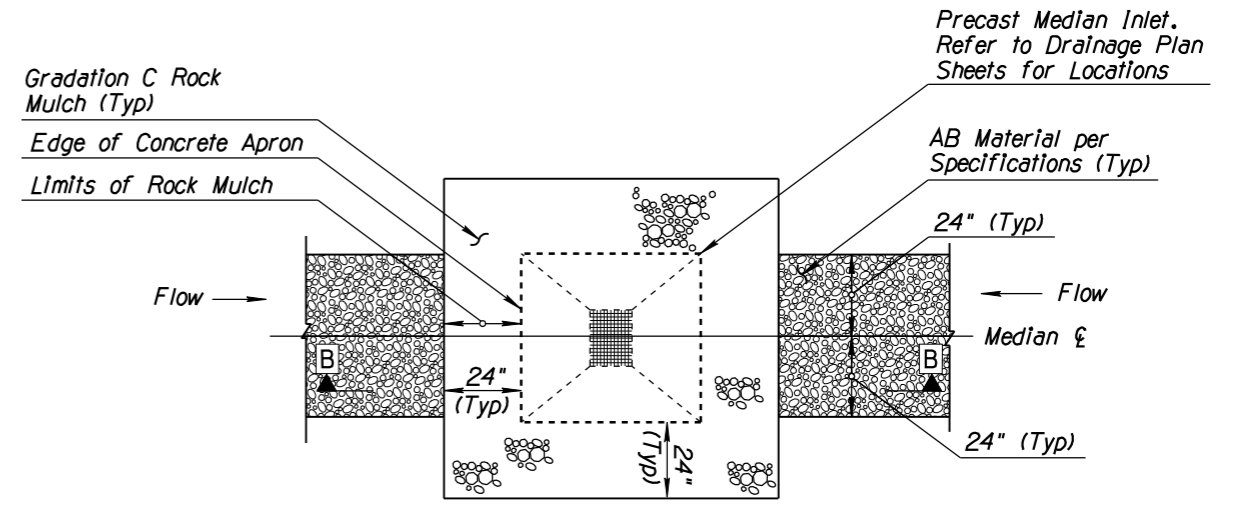


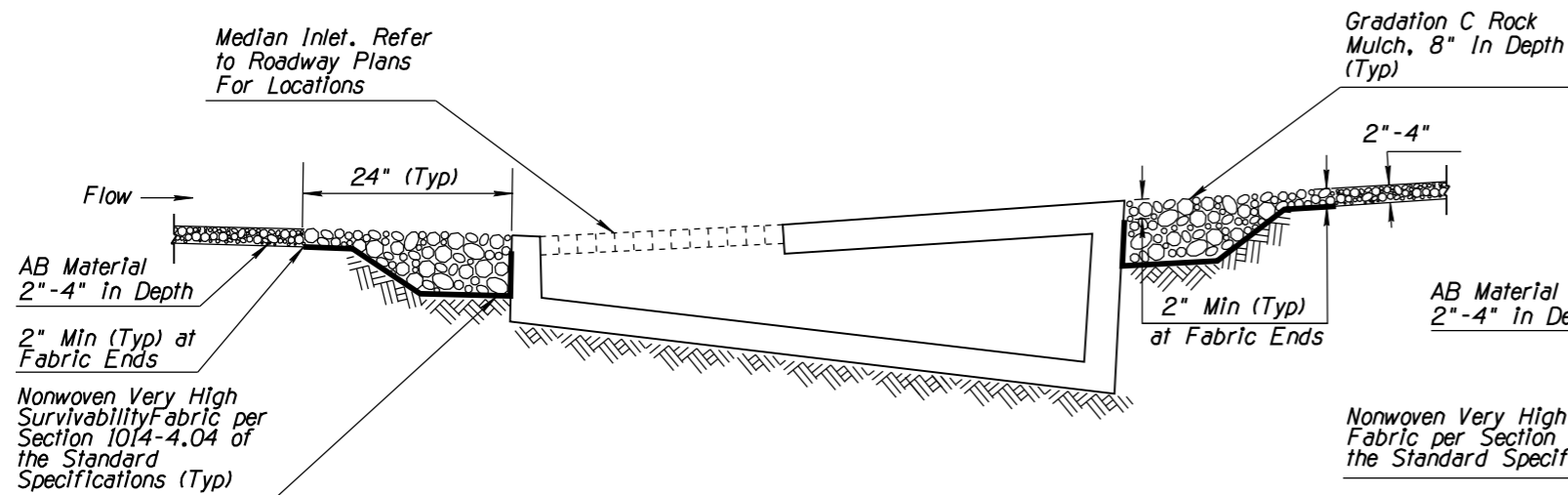
F.H.W.A. REGION	STATE	PROJECT NO.	SHEET NO.	TOTAL SHEETS	AS BUILT
9	ARIZ.				



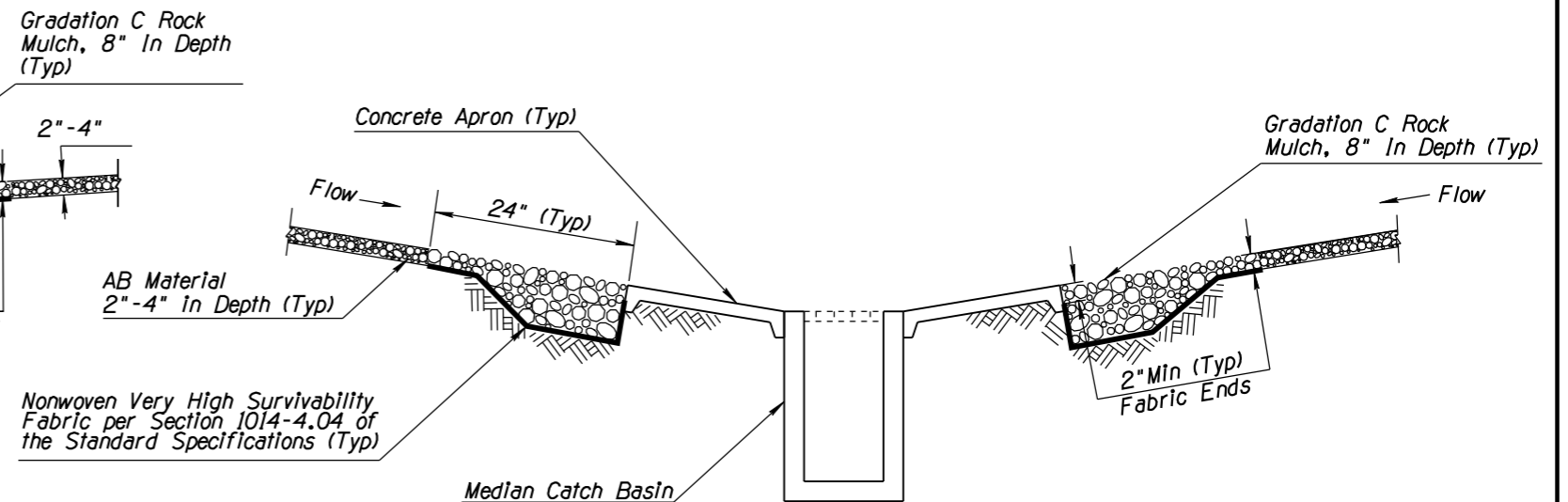
PLAN (NTS)



PLAN (NTS)



SECTION A-A (NTS)



SECTION B-B (NTS)

NOTES:

1. The depth of AB may be adjusted at the direction of the Engineer.
2. Refer to Roadway and Drainage Plans and Details for locations of Inlets and Catch Basins.
3. Nonwoven Very High Survivability Fabric shall conform to the standards of Section 1014-4.04 of the Standard Specifications.
4. Place Gradation C Rock Mulch and shape as shown on the Detail. Rock Mulch materials shall be fractured/crushed rocks in angular shape as defined in the sub-section 810-2.03 of ADOT Standard Specifications. Natural river-run materials, especially the rounded natural river rocks are not acceptable.
5. Field adjust and correct Median Inlet Protection BMP immediately if it is causing flooding erosion and/or affecting roadway safety.

DETAIL ES14

MEDIAN INLET PROTECTION

DESIGN	NAME	DATE	ARIZONA DEPARTMENT OF TRANSPORTATION INTERMODAL TRANSPORTATION DIVISION ROADSIDE DEVELOPMENT SECTION STORMWATER QUALITY PROTECTION & EROSION/SEDIMENT CONTROL DETAILS
DESIGN	TAO ZI FONG	05-2011	
DRAWN	HAN MENG	05-2011	
DRAWN	TAO ZI FONG	05-2011	
DRAWN	HAN MENG	05-2011	
CHECKED	E LEROY BRADY	05-2011	
TEAM LEADER	E LEROY BRADY	05-2011	
ROUTE	MP	LOCATION	
TRACS NO.			SHEET OF
			OF